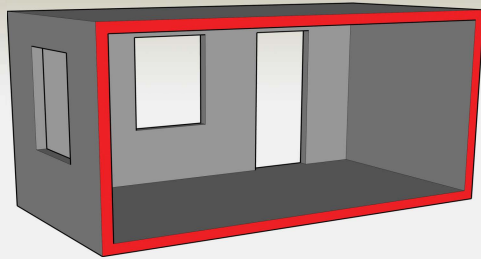


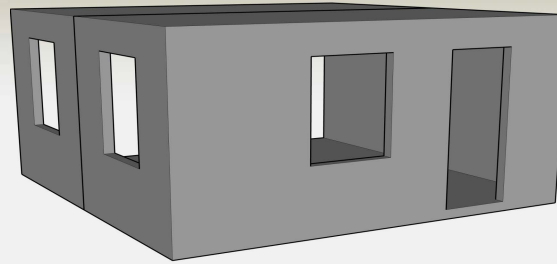
# MODULAR CONSTRUCTION SYSTEM

Cost and time pressure as well as missing skilled workers are massive challenges for the construction industry. 3D construction systems solves the problem by prefabrication in the factory and fast assembly on site

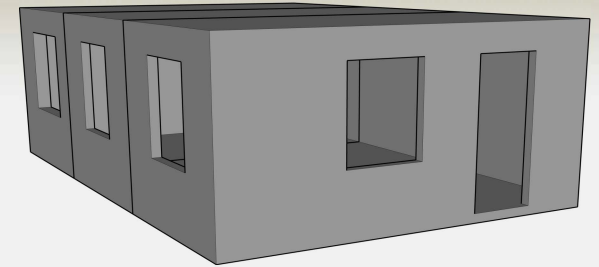
For example: Three modules make an affordable 49 m<sup>2</sup> apartment



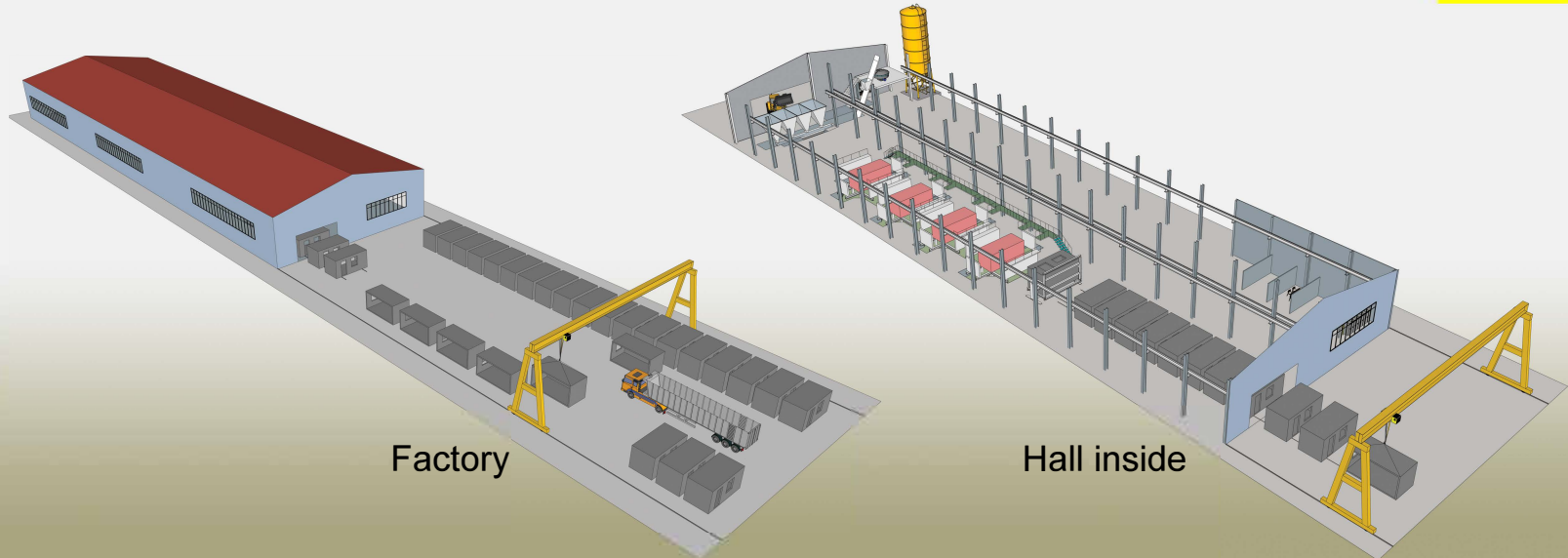
BASIC MODULE 16 m<sup>2</sup>



BASIC MODULE 16 m<sup>2</sup>  
+ EXTENSION 17 m<sup>2</sup> = 33 m<sup>2</sup>



BASIC MODULE 16 m<sup>2</sup>  
+ EXTENSION 17 m<sup>2</sup>  
+ END MODULE 16 m<sup>2</sup> = 49 m<sup>2</sup> Living space



Factory

Hall inside